

## A PERFECT FAMILY HOME

# The Connor II

SQUARE FOOTAGE

1,650



Thermofoil Cabinets



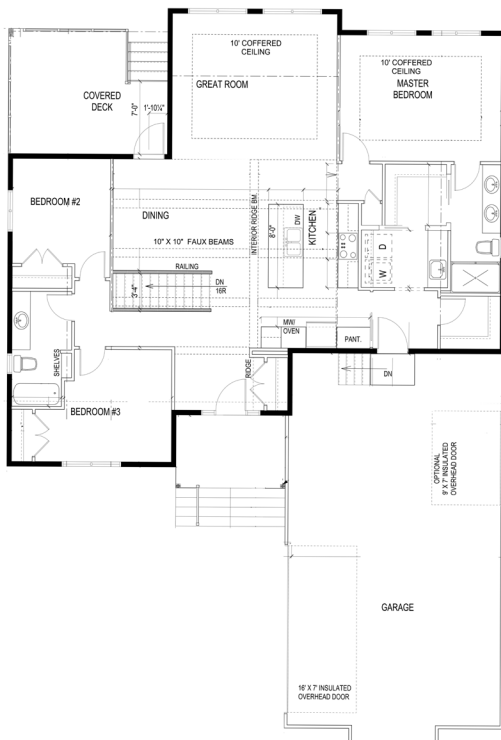
Luxury Vinyl Plank



Ceramic Back Splash



Appliance Package Optional



### Specifications

- 3 Bedrooms
- 2 Full Bathrooms
- Open Concept Floor Plan
- Faux Ceiling Beams
- Gourmet Kitchen With Island
- Main Floor Master Suite
- Main Floor Laundry
- Double Attached Garage
- Optional Basement Build

\*Custom Upgrades Optional\*

**CONTACT US**

B : 204-777-0838  
E : info@awcgrp.com

13-1051 Kapelus Drive,  
West St. Paul, R4A 5A4

[www.danzanteliving.ca](http://www.danzanteliving.ca)

# Optional Basement

